

Project :

File : ... \Výpočet.lpf

Summary

Grid summary

Average type : Arithmetic (A) or Weighted (W)

• Silnice (1)

Illuminance (lux)

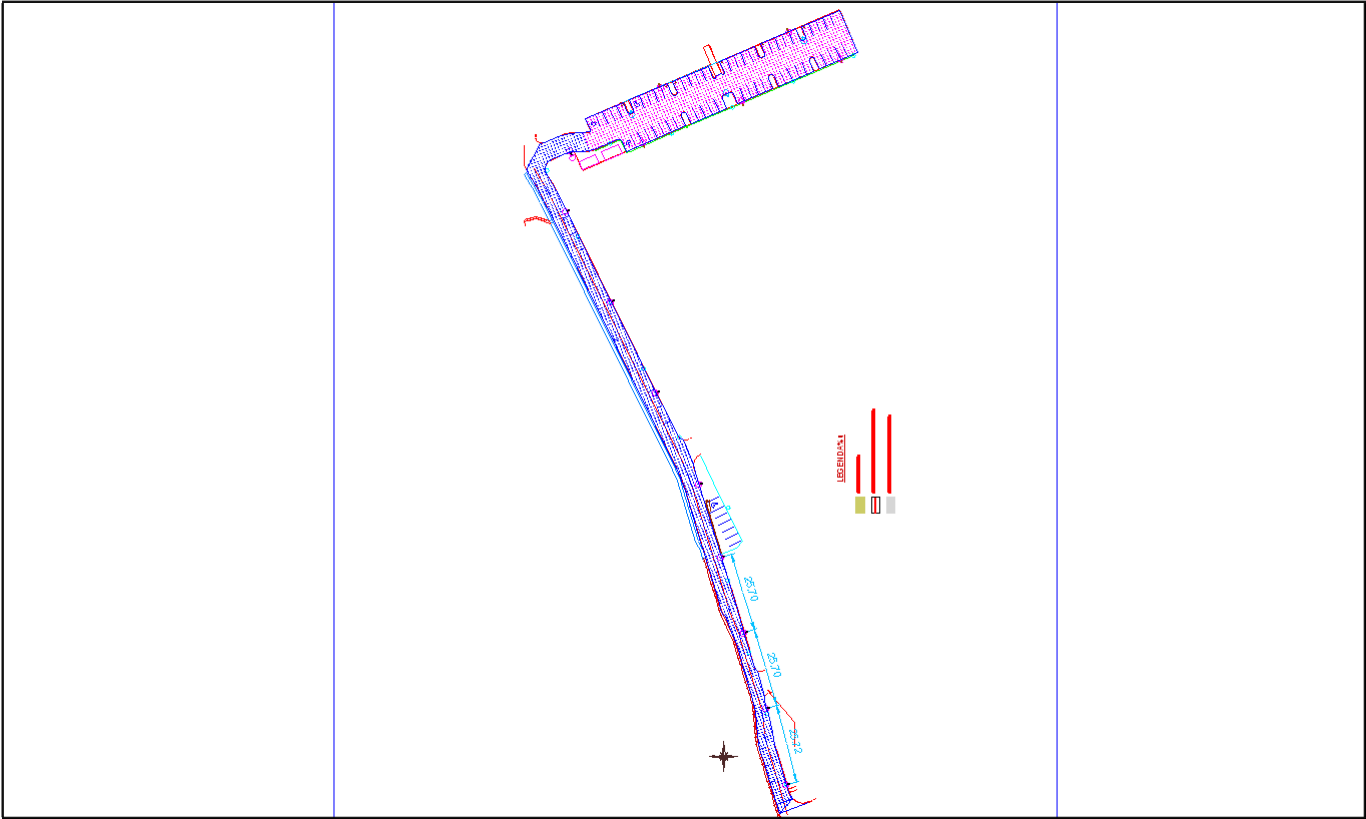
Configuration	Min	Max	Ave (A)	Min/Max	Min/Ave
Varianta 1 (1)	1,8	20,5	8,3	8,7	21,5
Varianta 1 (2)	1,8	20,6	8,3	8,6	21,5

• Parkoviste (2)

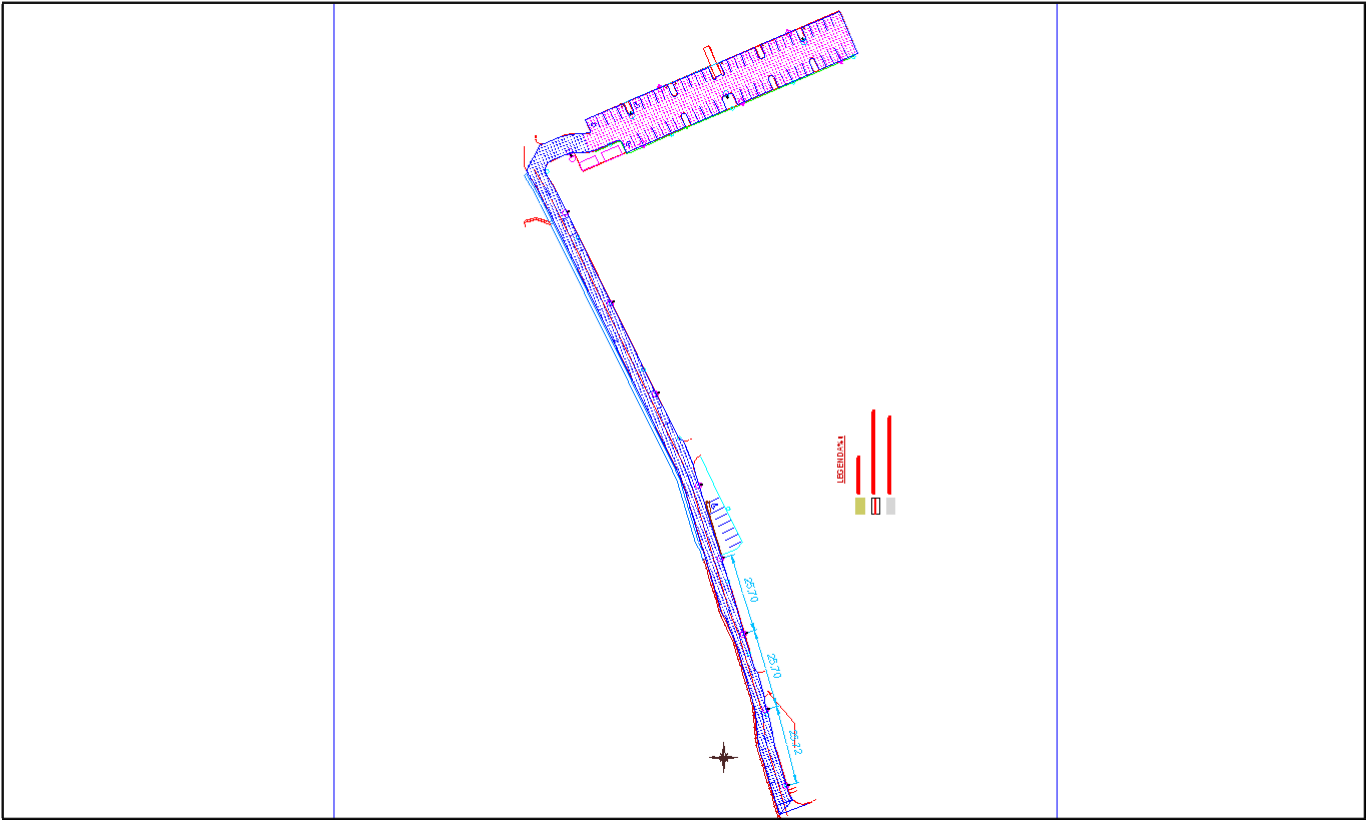
Illuminance (lux)

Configuration	Min	Max	Ave (A)	Min/Max	Min/Ave
Varianta 1 (1)	1,4	30,1	8,1	4,8	17,8
Varianta 1 (2)	1,2	16,6	6,6	7,3	18,3

Current view Varianta 1 (1)

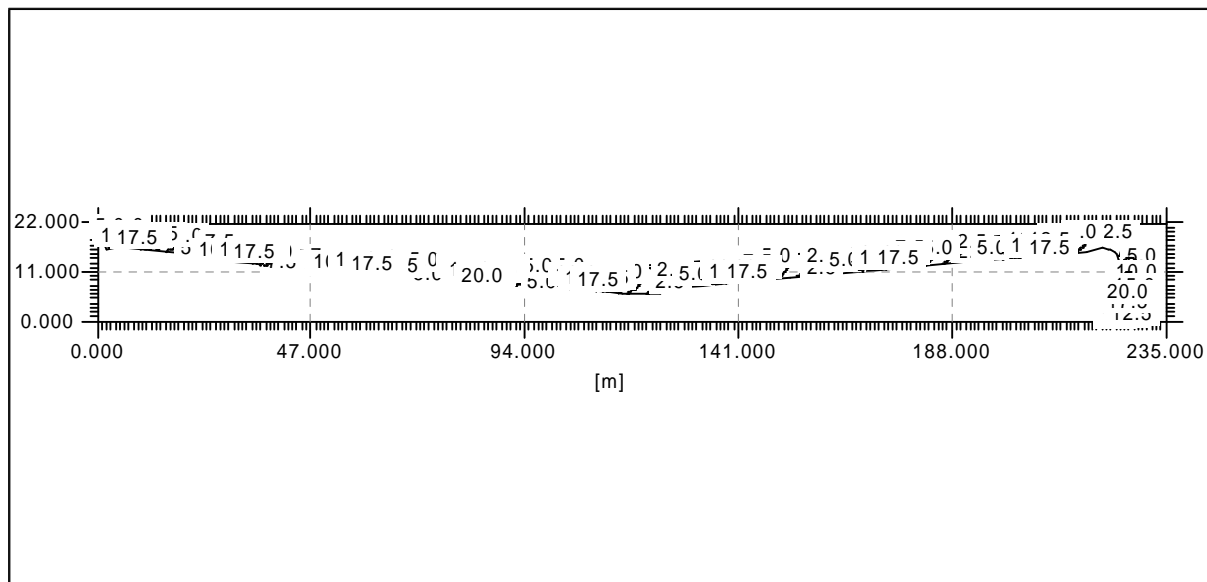
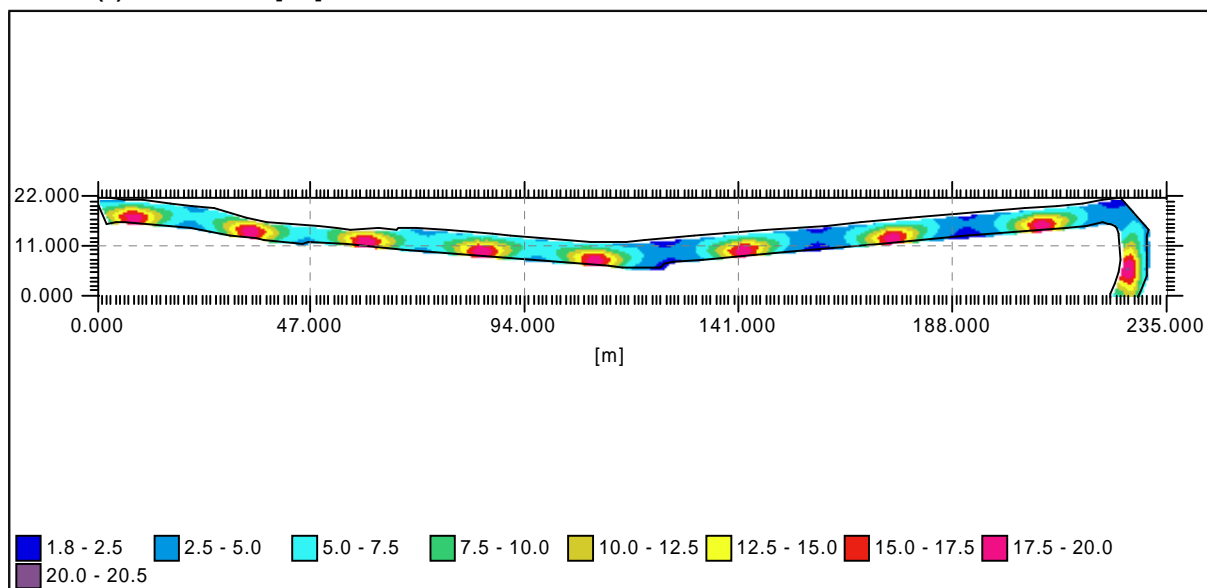


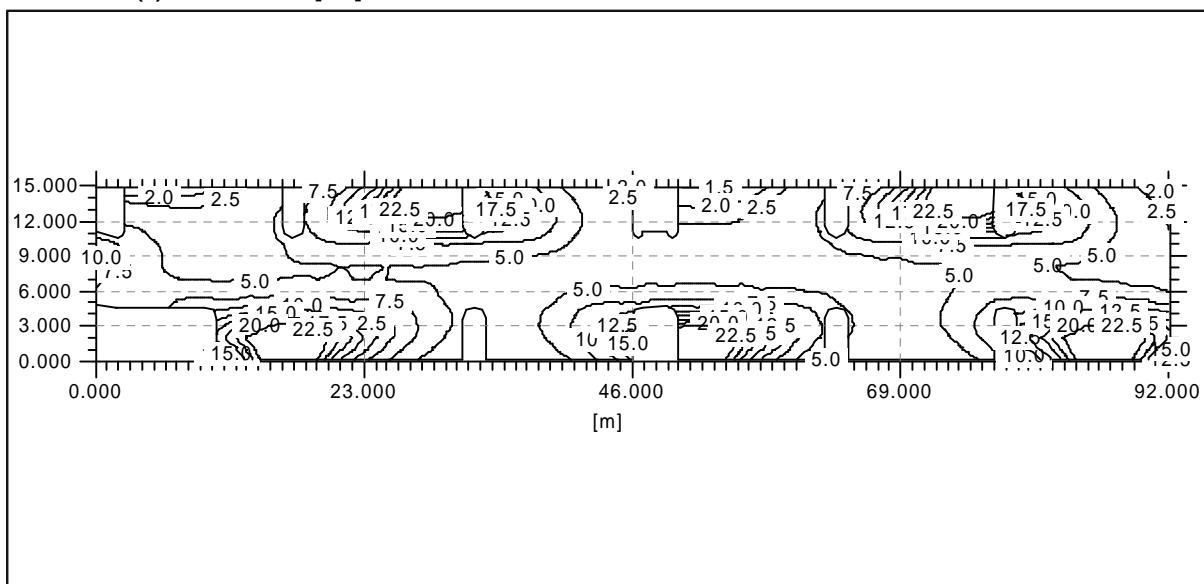
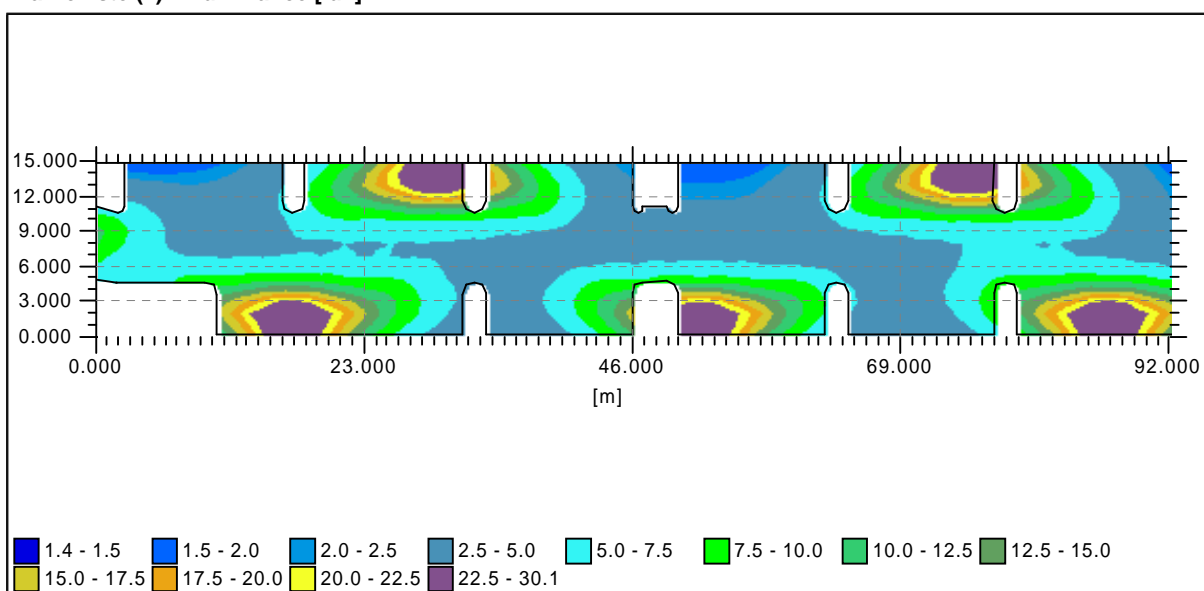
Current view Varianta 1 (2)



Grid results

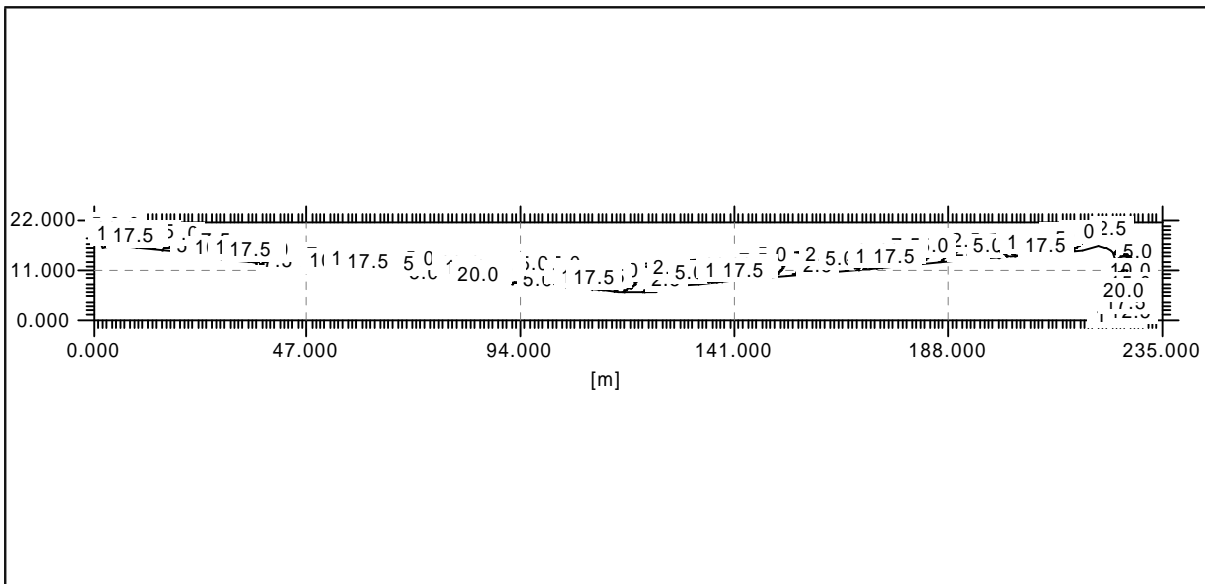
Average type : Arithmetic (A) or Weighted (W)

Varianta 1 (1)**Silnice (1) : Illuminance [lux]****Silnice (1) : Illuminance [lux]**

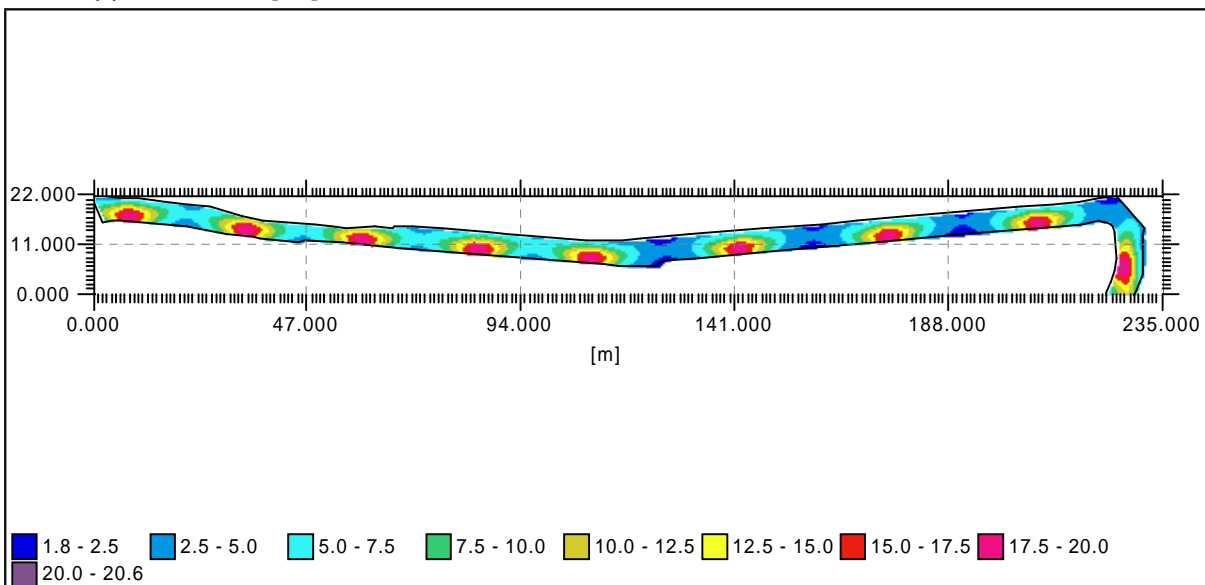
Parkoviste (2) : Illuminance [lux]**Parkoviste (2) : Illuminance [lux]**

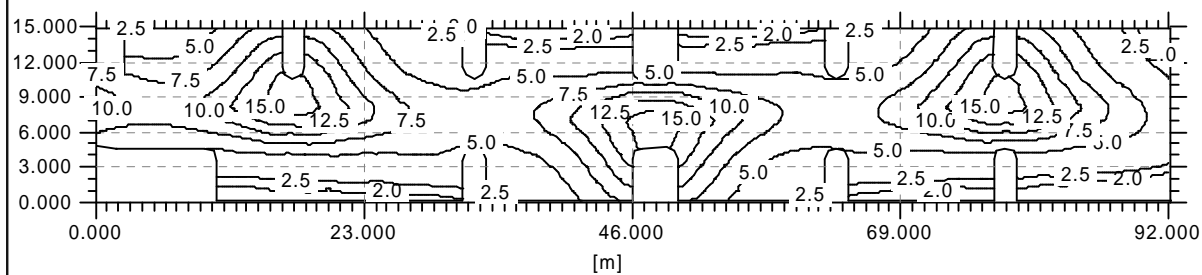
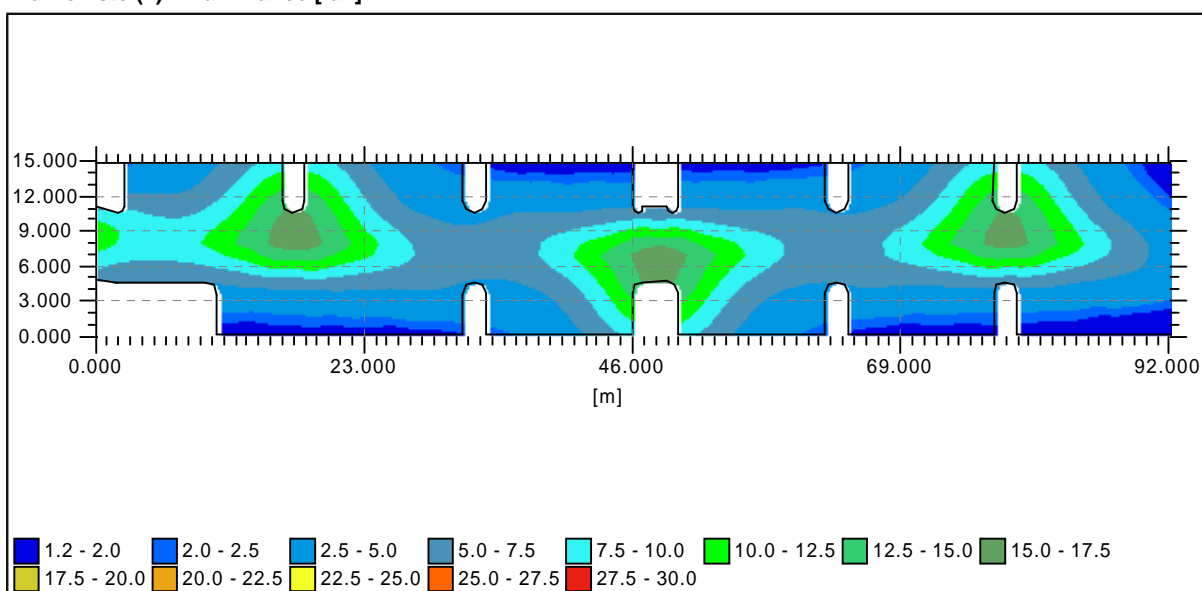
Variantă 1 (2)

Silnice (1) : Illuminance [lux]



Silnice (1) : Illuminance [lux]



Parkoviste (2) : Illuminance [lux]**Parkoviste (2) : Illuminance [lux]**

General information

Configuration details

• Varianta 1 (1)

Activated ☒

Matrix	Description	Flux	MF	Luminaire
974164	C:\Matrices\974164.mat	4,4	0,85	No Picture

Group details

Single								
	N°	Start			Luminaire			
		X	Y	H	Matrix	Az	Inc	Rot
✓	1	67,199	-200,111	5,500	974164	251,0	0,0	0,0
✓	2	60,713	-175,210	5,500	974164	256,0	0,0	0,0
✓	3	53,470	-150,598	5,500	974164	253,0	0,0	0,0
✓	4	46,010	-125,914	5,500	974164	250,0	0,0	0,0
✓	5	38,695	-102,094	5,500	974164	252,0	0,0	0,0
✓	6	24,713	-72,148	5,500	974164	243,0	0,0	0,0
✓	7	10,011	-42,599	5,500	974164	241,0	0,0	0,0
✓	8	-4,656	-13,086	5,500	974164	242,0	0,0	0,0
✓	9	-3,658	5,454	5,500	974164	339,0	0,0	0,0
✓	10	20,101	8,031	5,500	974164	338,0	0,0	0,0
✓	11	52,316	21,688	5,500	974164	337,0	0,0	0,0
✓	12	84,424	35,526	5,500	974164	337,0	0,0	0,0
✓	13	25,091	28,034	5,500	974164	157,0	0,0	0,0
✓	14	66,972	45,895	5,500	974164	157,0	0,0	0,0

• Varianta 1 (2)

Activated ☒

Matrix	Description	Flux	MF	Luminaire
974164	C:\Matrices\974164.mat	4,4	0,85	No Picture

Group details

Single								
	N°	Start			Luminaire			
		X	Y	H	Matrix	Az	Inc	Rot
✓	1	67,199	-200,111	5,500	974164	251,0	0,0	0,0
✓	2	60,713	-175,210	5,500	974164	256,0	0,0	0,0
✓	3	53,470	-150,598	5,500	974164	253,0	0,0	0,0
✓	4	46,010	-125,914	5,500	974164	250,0	0,0	0,0
✓	5	38,695	-102,094	5,500	974164	252,0	0,0	0,0
✓	6	24,713	-72,148	5,500	974164	243,0	0,0	0,0
✓	7	10,011	-42,599	5,500	974164	241,0	0,0	0,0
✓	8	-4,656	-13,086	5,500	974164	242,0	0,0	0,0
✓	9	-3,708	5,354	5,500	974164	339,0	0,0	0,0
✓	10	15,813	19,114	7,500	974164	159,0	0,0	0,0
✓	11	71,828	43,191	7,500	974164	157,0	0,0	0,0
✓	12	47,310	24,366	7,500	974164	337,0	0,0	0,0

Photometric documents

974164

C:\Matrices\974164.mat

Polar / Cartesian diagram

